

JetLofts.com

Brochure Online

## JetLofts

Space, Greenery and Style in the heart of a Community

modern urban living in a classic space

Discover your superb loft or apartment in a peaceful landscaped garden haven.

JetLofts is Victoria Lofts' fourth important project in Brussels. Following on Victoria Lofts, Victoria Residences, GLofts, all innovative, high quality residential projects.



Landscaped gardens, terraces, luminous windows



Aerial view into gardens



Located near one of the main access points of north-west Brussels, JetLofts is positioned so as to offer easy access to the town centre, a host of local amenities and is near to some Brussels most imposing parks and green spaces.

Originally a tobacco drying factory and vast car dealership facility, the JetLofts project embraces an entire block of one of the most pleasant areas of a commune whose reputation is "a village in the city".

The innovative design of the project embraces existing structures and amplifies a sense of green garden area, so as to give this award-winning apartment and loft conception the touch of modernity and space that will be unique in the area.

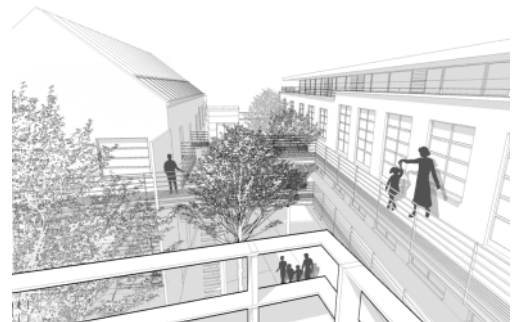
Communal gardens flow harmoniously, integrating the private gardens into the overall design, amplifying the sense of space and unity. Extensive private covered parking for 60 cars are hidden underground so as to eliminate any interference from traffic. The aerial walkways underscore the remarkable manner in which the architects **Accarain Bouillot** have approached the challenge of offering light, luminous and attractive apartment and loft units that will become a landmark in the area.

Internal facilities are in abundance: each loft its own parking space, each owner has access to a fully equipped private fitness - gymnasium that Victoria Lofts' offers to JetLofts residents. Each loft also has a secure storage area. The landscape gardens designed by Vaxelaire & Deckers are conceived so as to be enhanced by a magnificent open air swimming pool.

The location of JetLofts is optimal for anyone who is active and yet values quality of life: as the crow flies the distance to the town centre is 3.9km, the National airport is 12km, Antwerp 40 km, Lille 80 km, Knokke (the seaside) 96 km, London 313kms, Amsterdam 176 km and Paris 256 km.

The complex integrates 3 separate buildings, a former tobacco drying plant, the Directors house which will be transformed into 31 lofts and the former garage area which will be demolished and rebuilt into approx. 25 stylish apartments.

All of the lofts benefit from access to the landscaped communal gardens, parking spaces, the fully equipped gymnasium, parking space, bike park, and of course the special Victoria Lofts touch.



JetLofts can be viewed at the address below by appointment with our agent

JetLofts  
Rue Werrie B-1090 BXL

JetLofts contains a limited number of units, so if you would like further information on how to become an owner why not arrange a visit with our agent ?

Immobilier Neuf  
Tel: +32 (0)2 423 00 00  
[info@immobilierneuf.be](mailto:info@immobilierneuf.be)

For more information visit [www.JetLofts.com](http://www.JetLofts.com)

A Victoria Lofts Project  
modern urban living in a classic space

Presented by

Victoria  
Lofts.com

Presented by

Victoria  
Lofts.com

Brochure Online

JetLofts.com